

Distributed Biological Observatory (DBO)

Linking Physics & Biology in the Arctic

Pacific DBO: Examples of SWL17, AMBON17, HLY1702: Macrofauna and sediments

Jacqueline M. Grebmeier

Chesapeake Biological Laboratory

University of Maryland Center for Environmental Science, Solomons, MD, USA

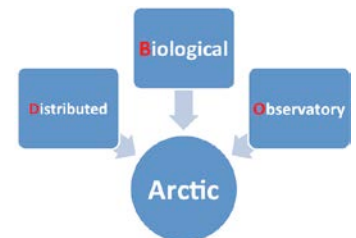
4th DBO Data Workshop

November 8, 2017

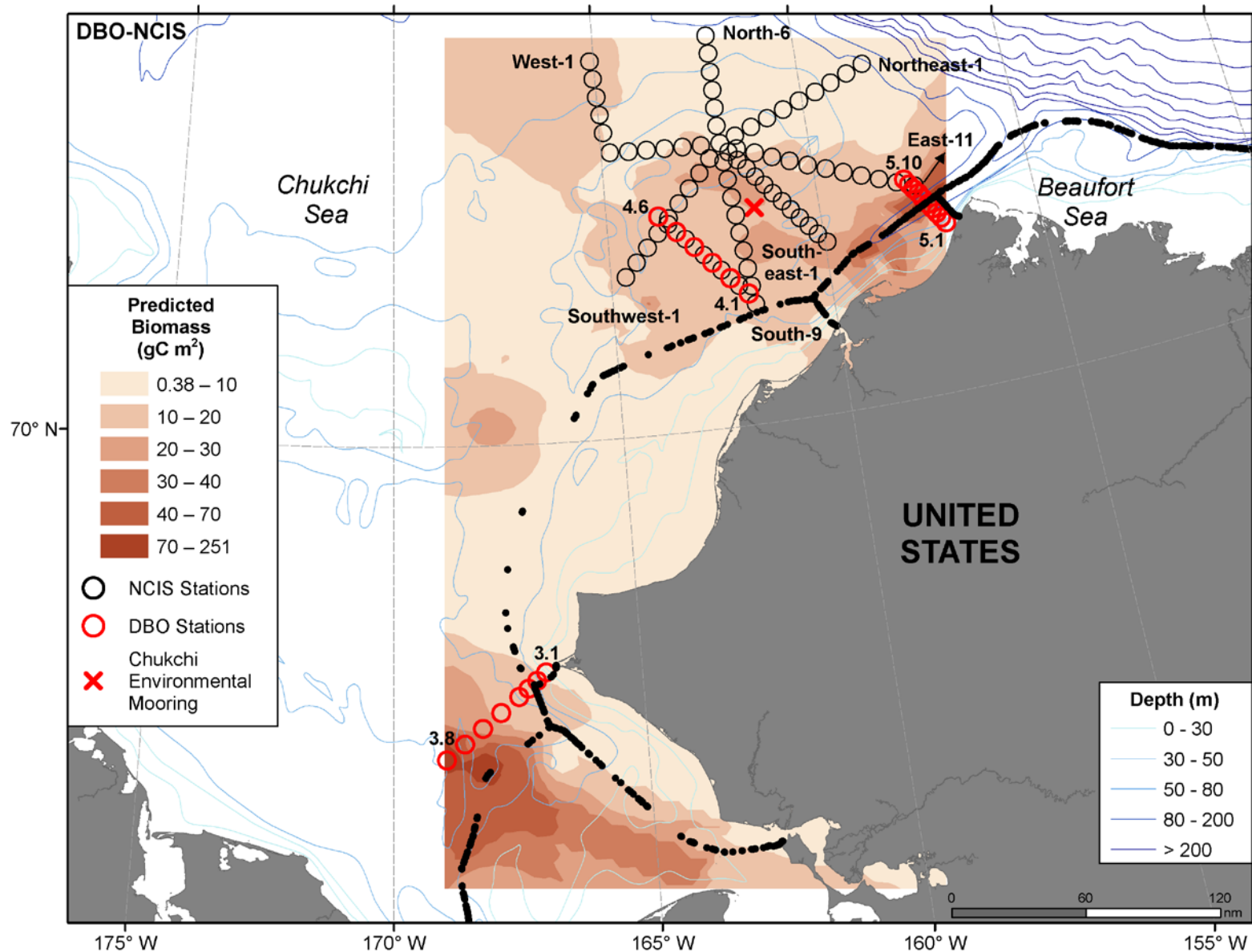
Seattle, Washington, USA



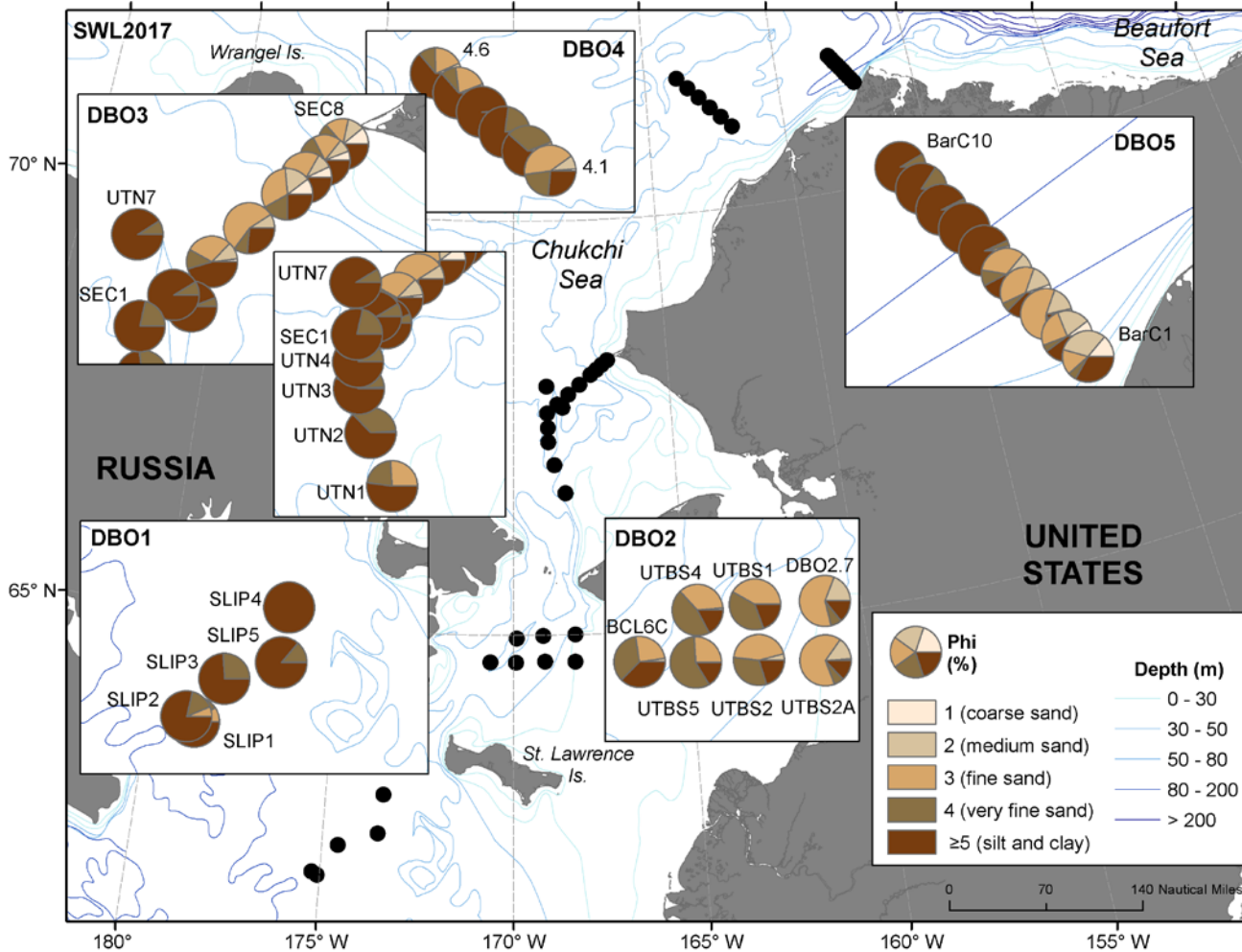
<http://www.arctic.noaa.gov/dbo/>



Benthic macrofaunal biomass overlain by HLY1702 sampling plan, with fiber optic cable track

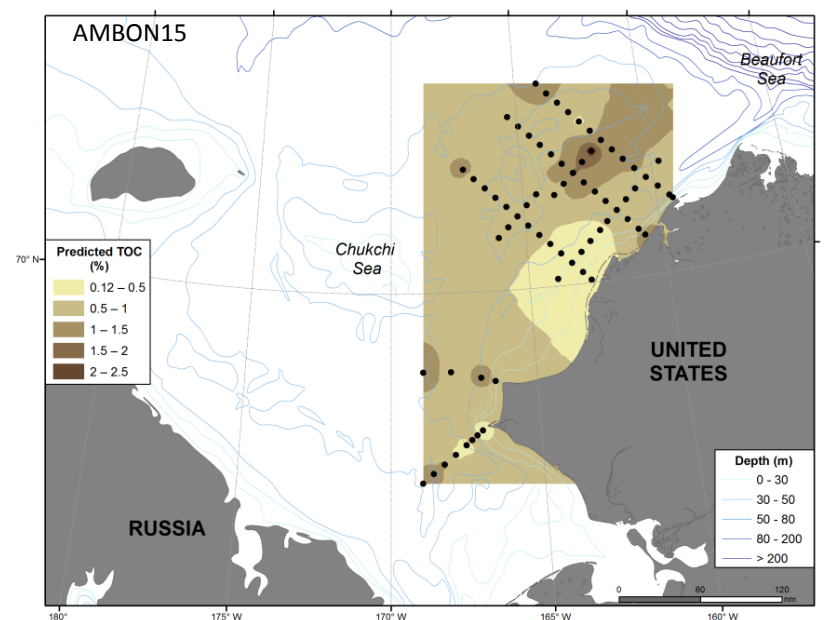
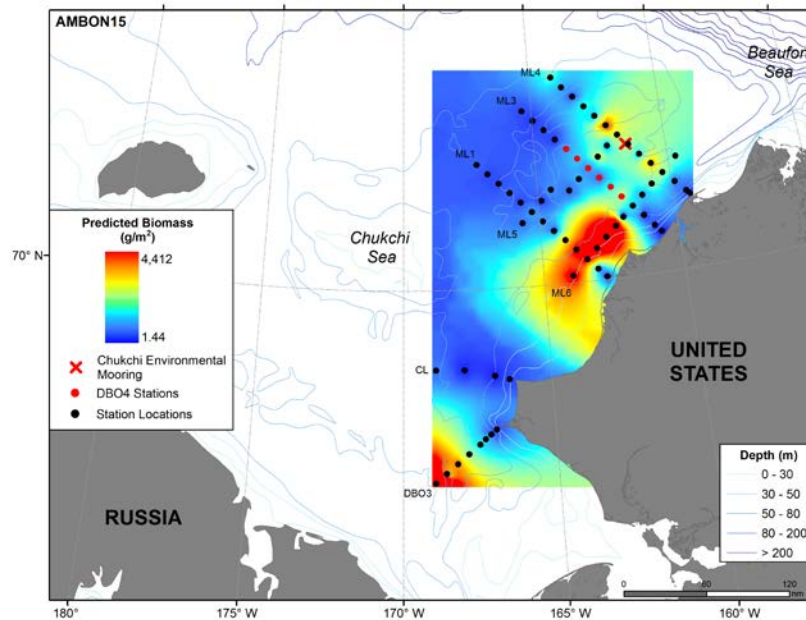
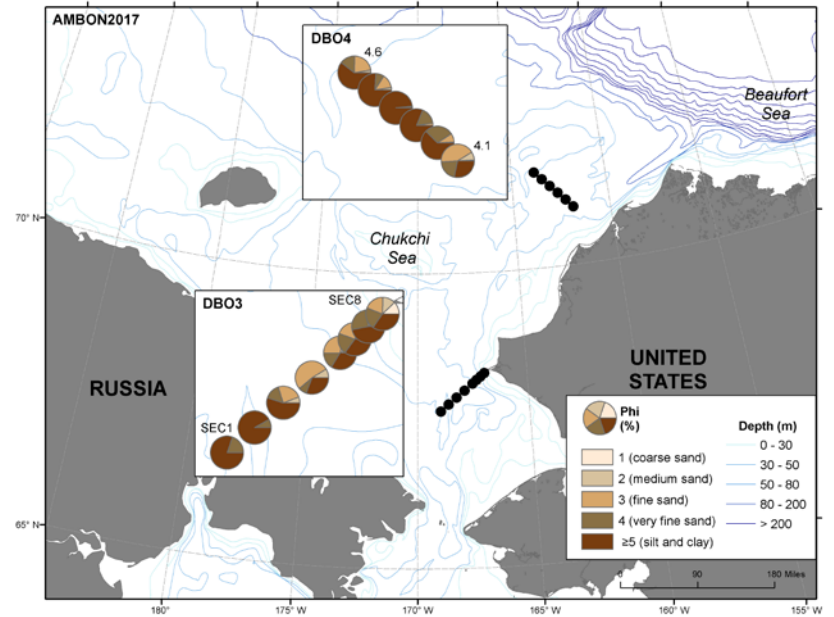
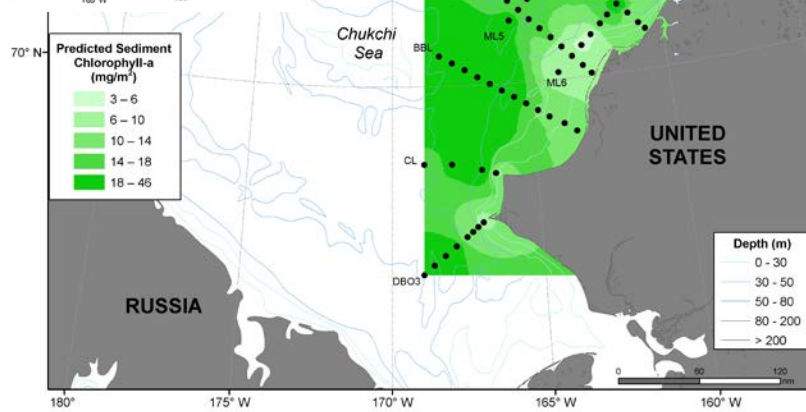
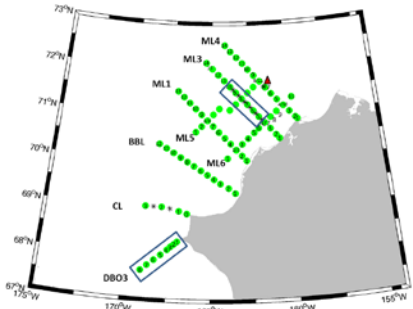


SWL17: Sediment grain size for DBO1-5



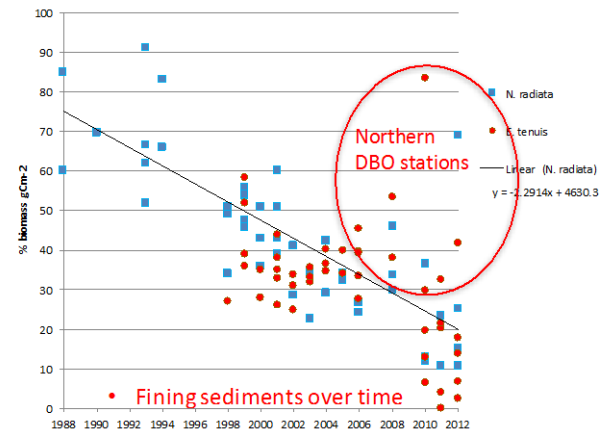
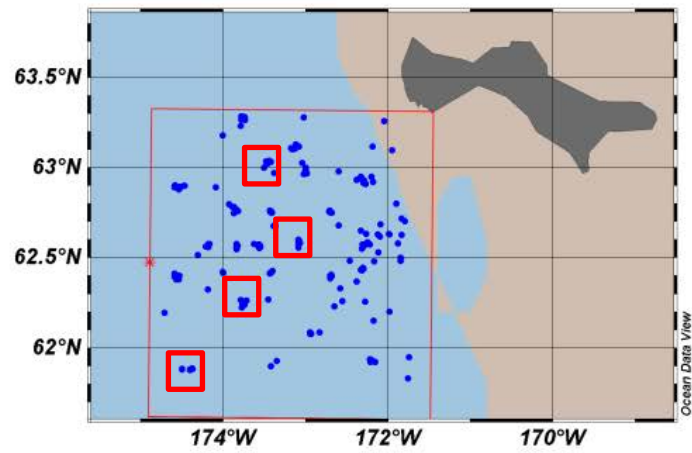
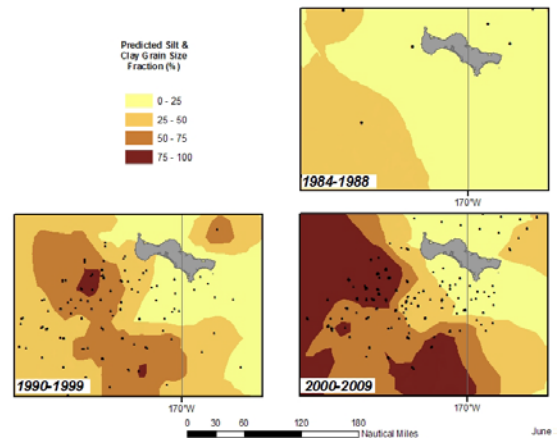
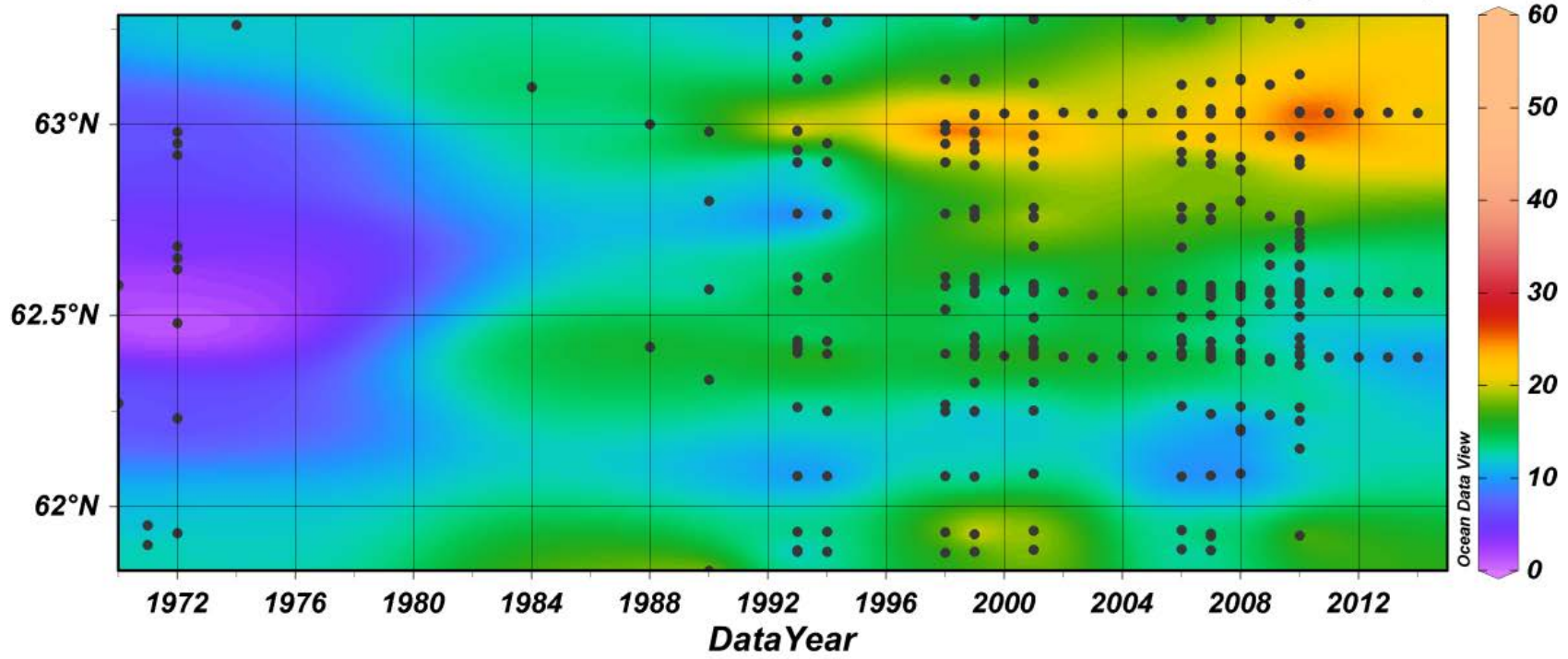
- Highest % total organic carbon content in silt & clay regions in lower current areas
- High silt & clay in DBO1, offshore DBO3 sites, DBO4.4, and western half of DBO5
- High TOC and silt/clay coincident with higher benthic biomass
- Lowest silt & clay content in sandy area of DBO 2 (Chirikov Basin), eastern part of DBO3-DBO5 in Alaska Coastal water

AMBON 2015 and 2017



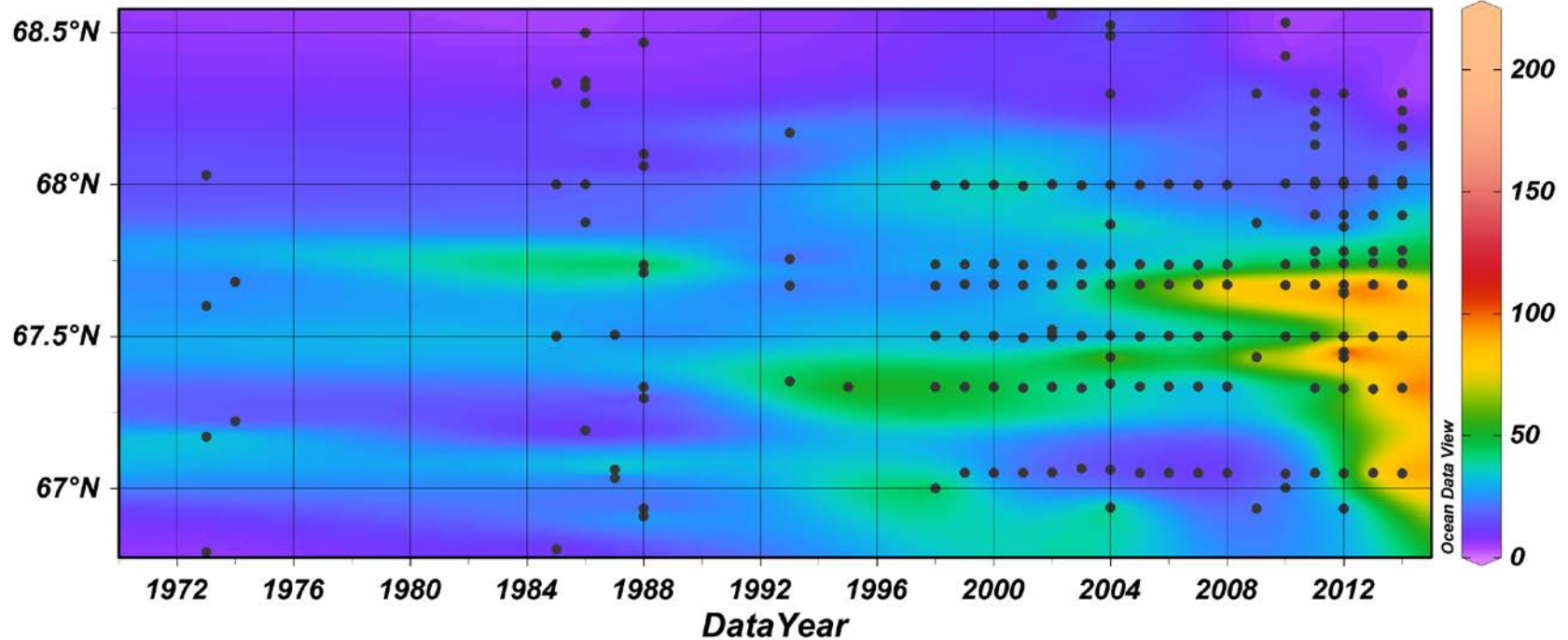
Times series of benthic biomass and dominant macrofauna type in the northern Bering Sea (DBO1)

Biomass [g C/m²]

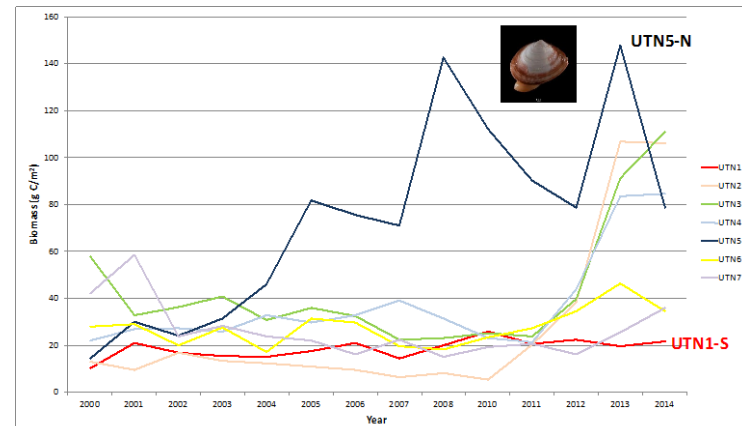
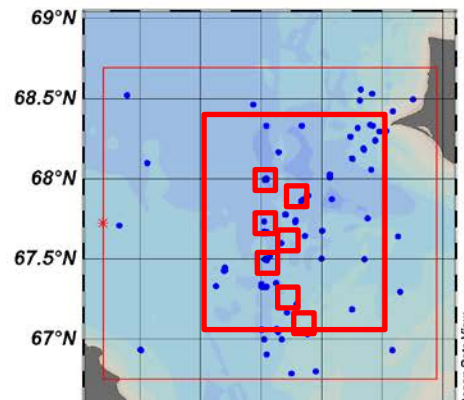
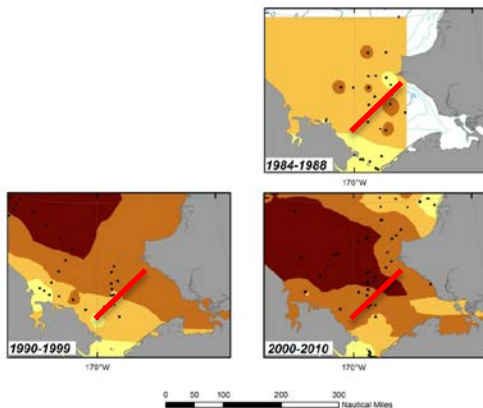


Times series of benthic biomass and dominant macrofauna type in the SE Chukchi Sea (DBO3)

Biomass [g C/m²]



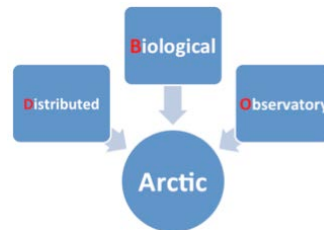
Southern Chukchi



Thank you for your attention.

Questions and comments?

Thank you to all DBO collaborators, field and laboratory technicians over the years for the time series efforts. Financial support for the science provided by the US NSF, NOAA, BOEM, NASA, and ongoing international science partners in the Pacific Arctic Group.



<http://www.arctic.noaa.gov/dbo/>

USA agency support

