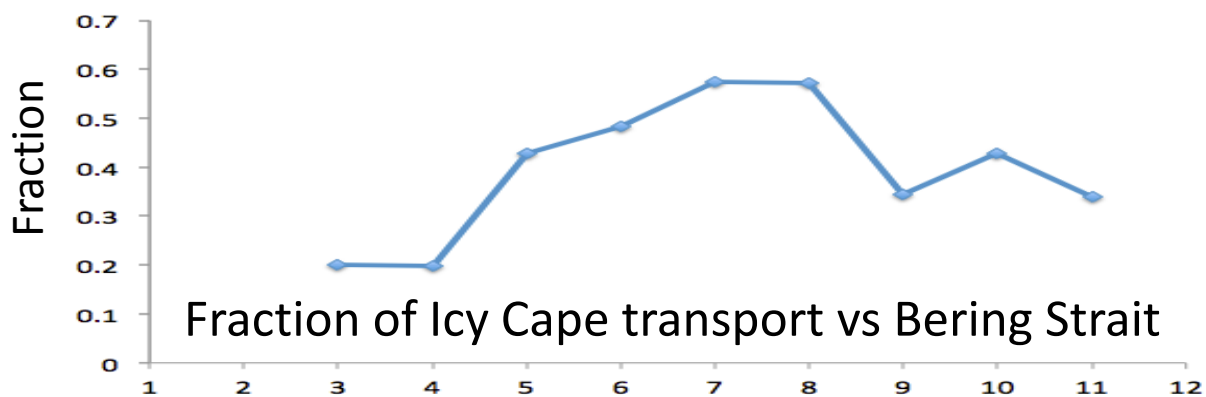
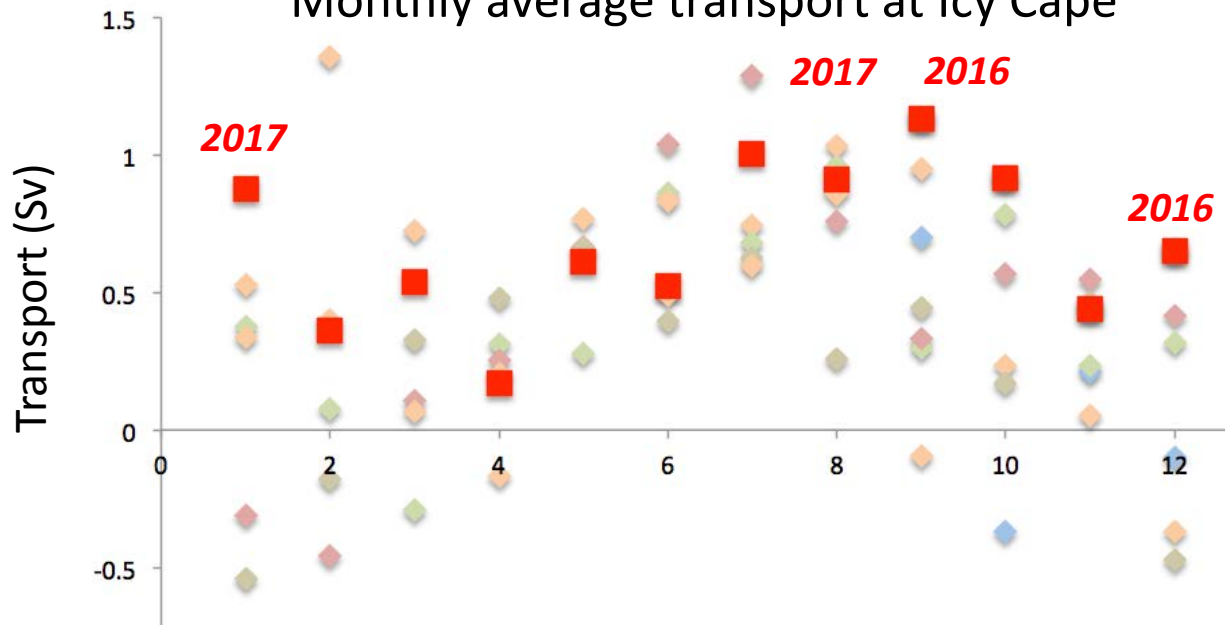


2010-11	0.45 Sv
2011-12	0.24 Sv
2012-13	0.46 Sv
2013-14	0.33 Sv
2014-15	0.55 Sv
2016-17	0.60 Sv

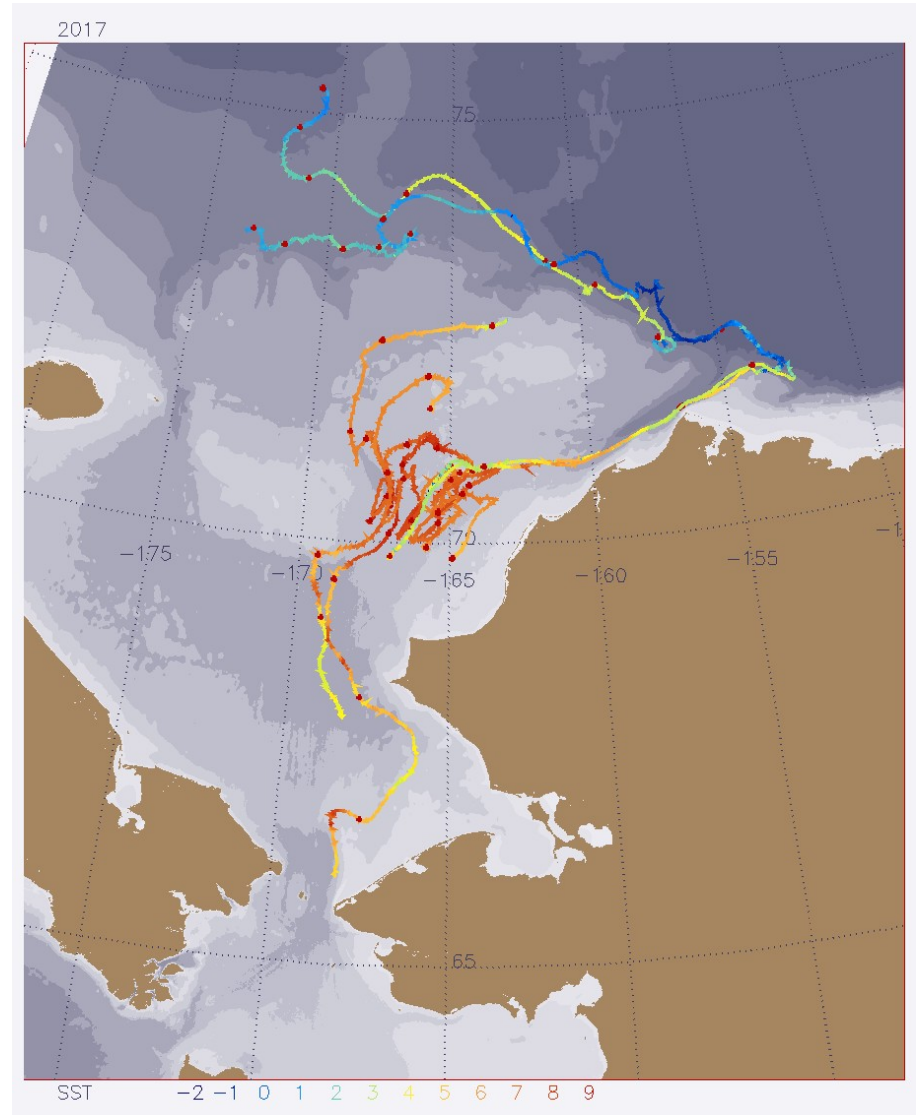
Monthly average transport at Icy Cape



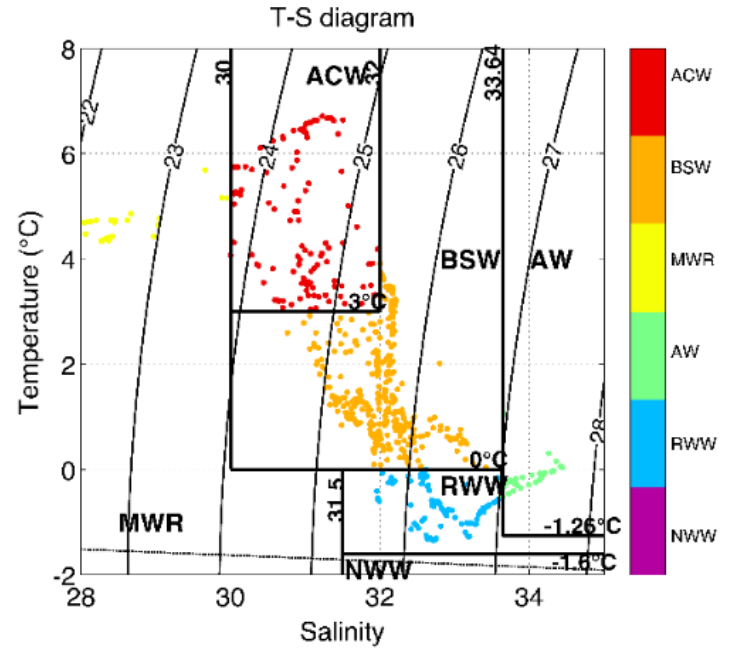
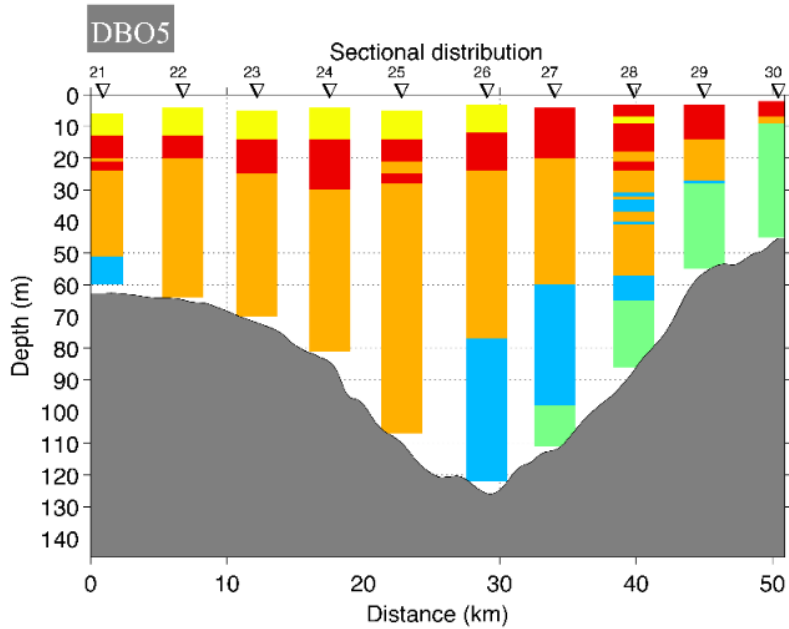
Fraction of Icy Cape transport vs Bering Strait

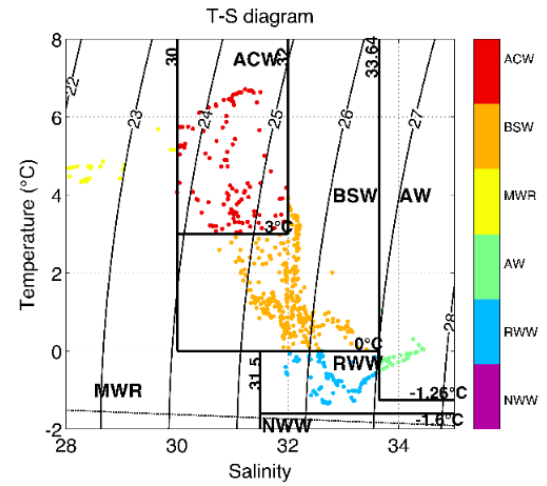
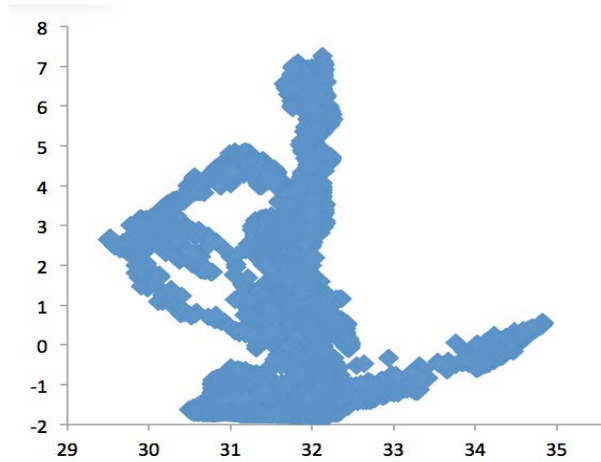
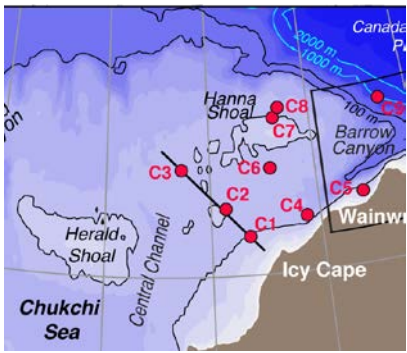
Eco FOCI and Distributed Biological Observatory (NCIS)

Satellite tracked drifters (~32 m)

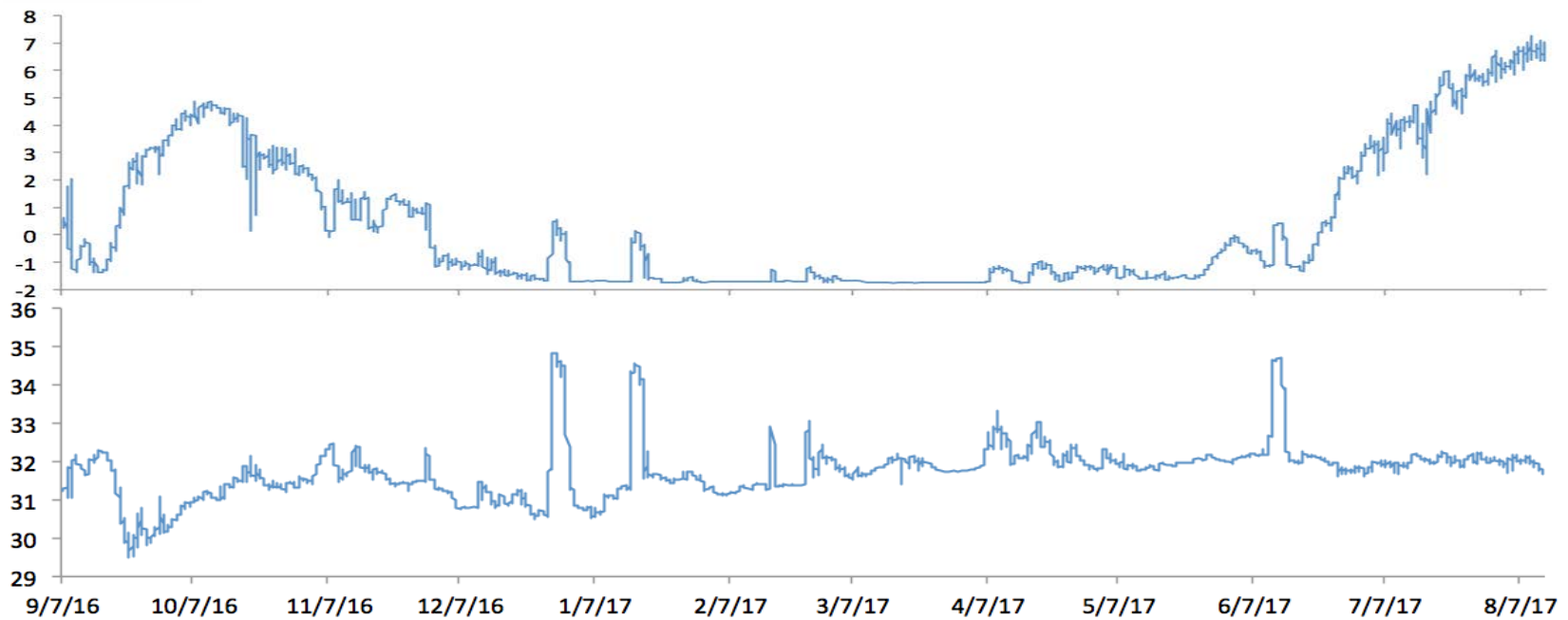


DBO5 August 2017

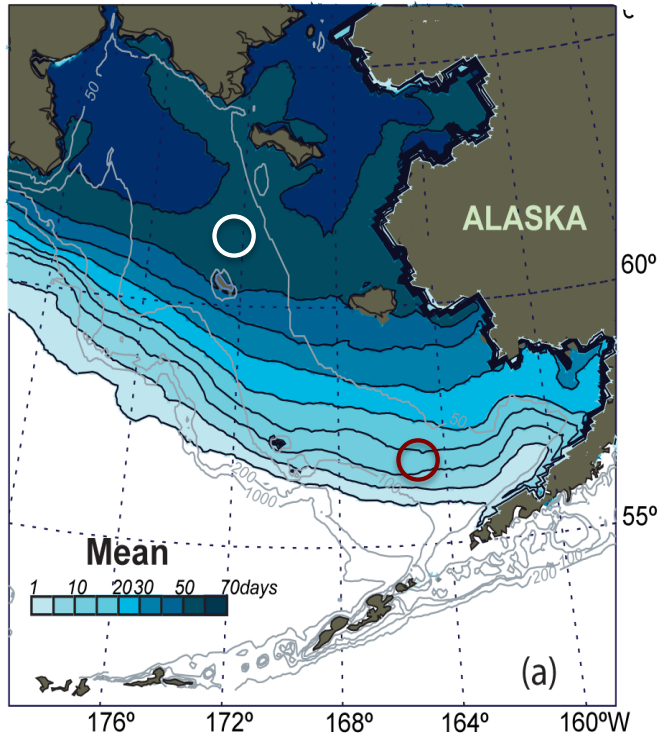




C5

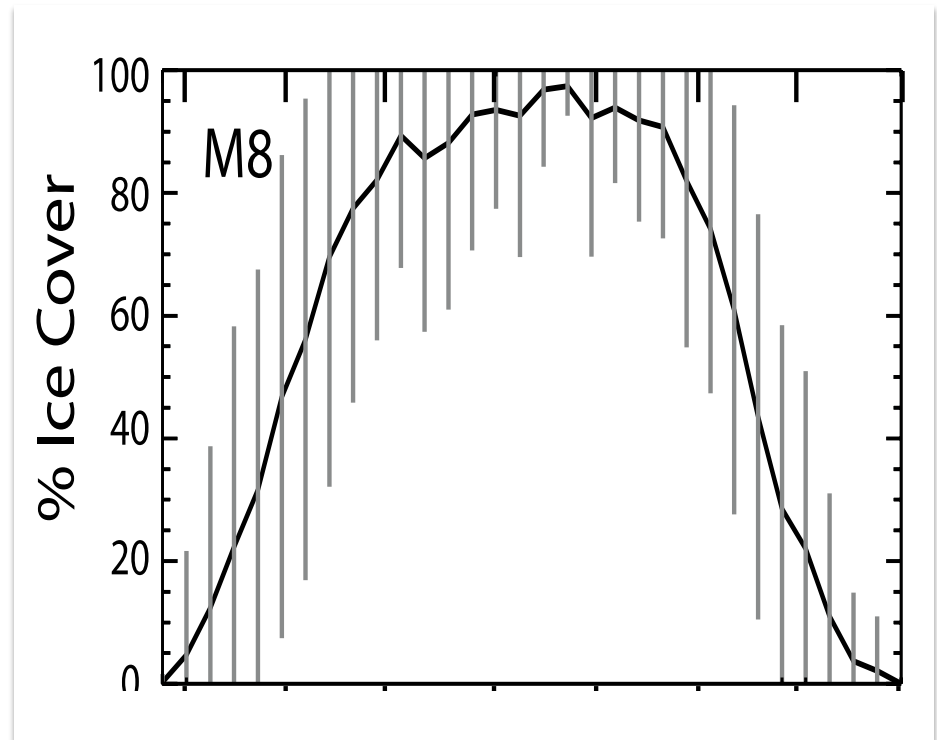


DBO1



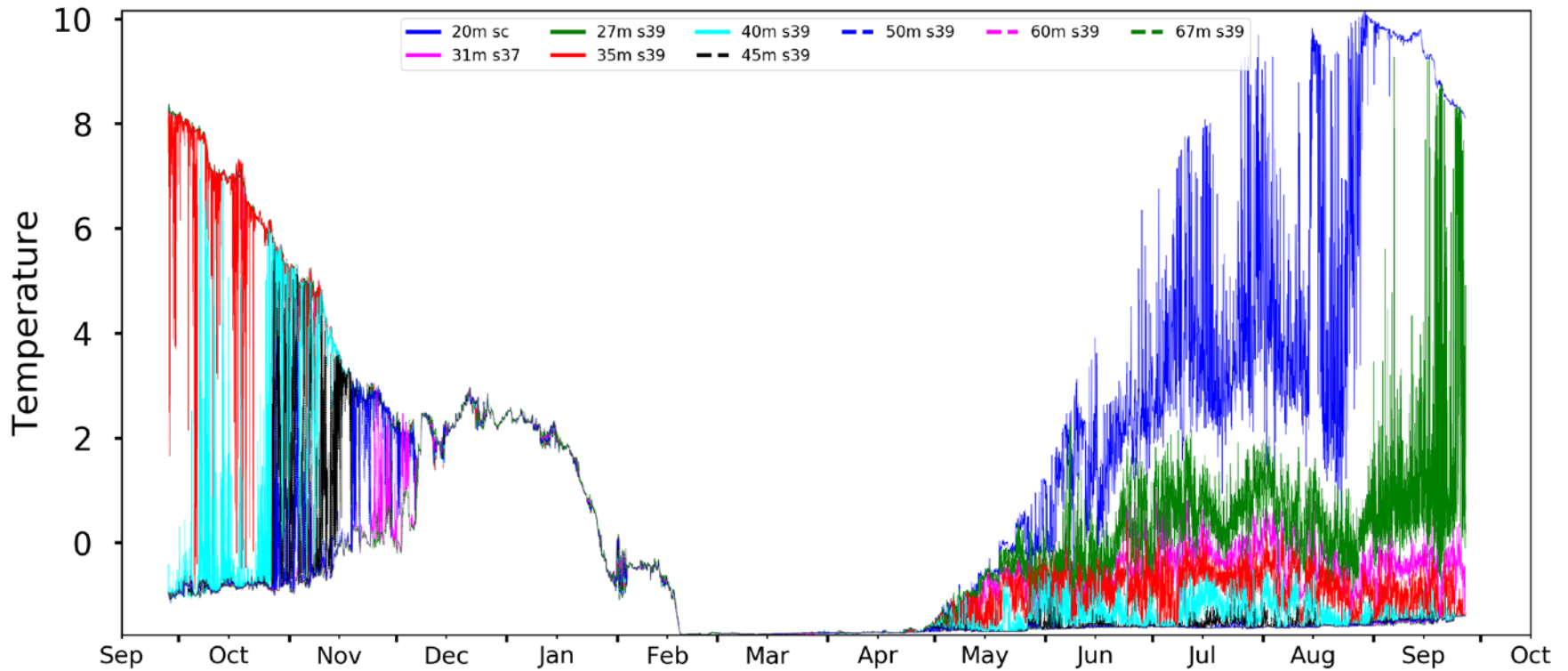
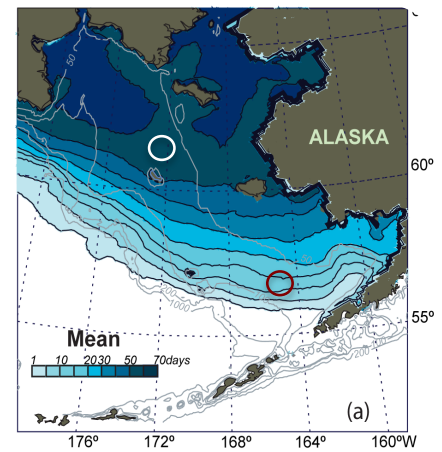
Mean number of days in March and April with ice cover.

M8

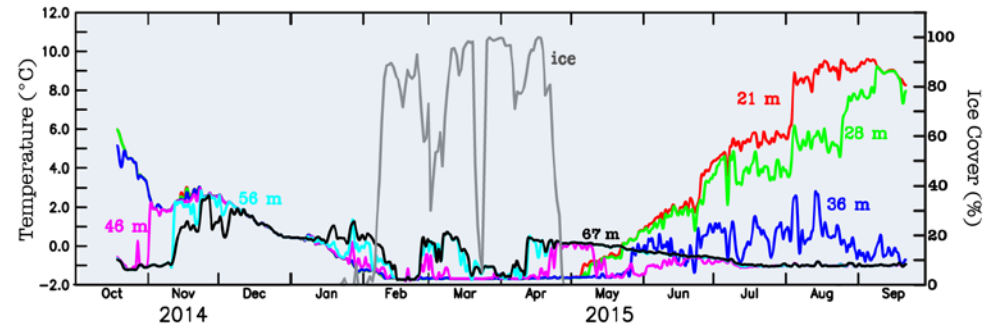
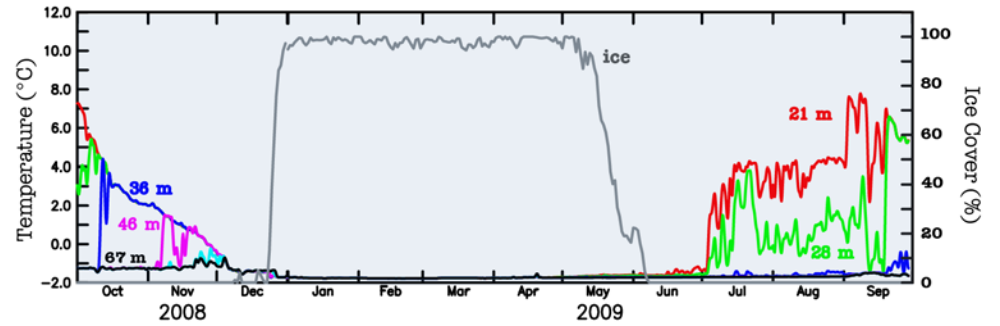
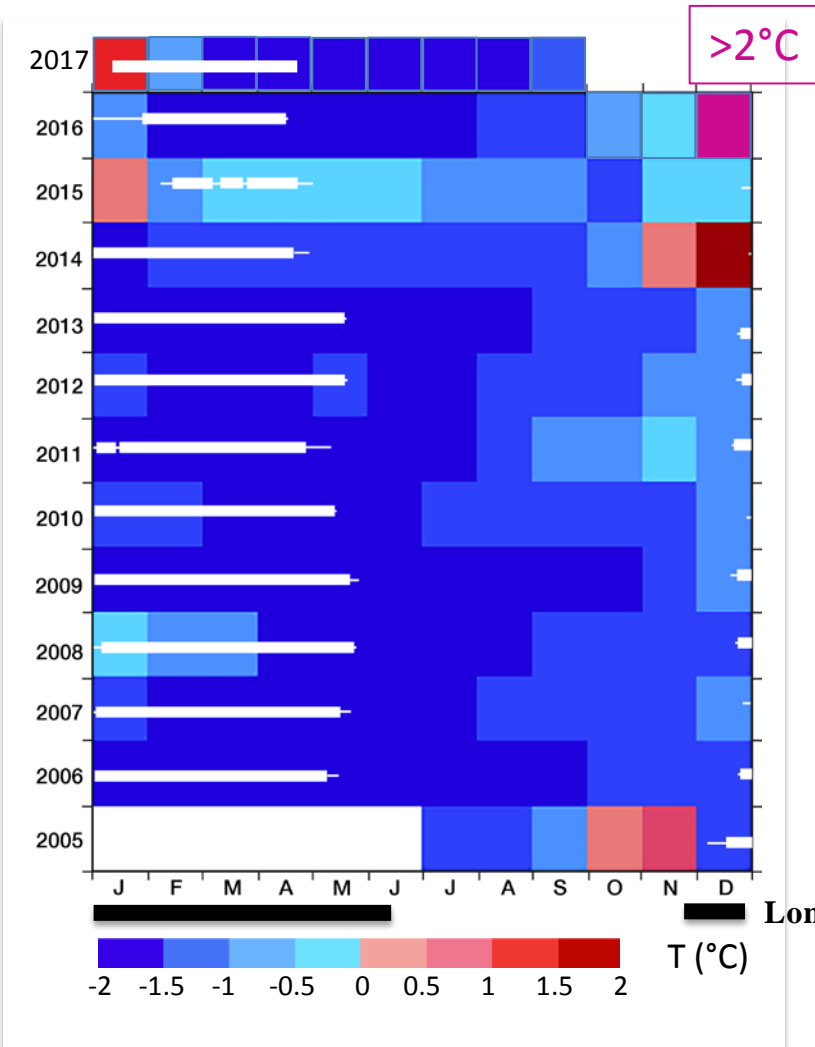
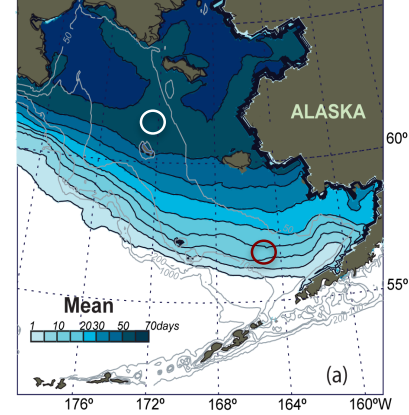


Weekly average and standard deviation ice cover at M8 in DBO1.

DBO1: M8 Temperature



Bottom Temperatures at DBO1



Long term ice average