

# *Welcome*

5<sup>th</sup> DBO Data Meeting

January 22-23, 2020

NOAA's Pacific Marine Environmental Laboratory

Seattle, Washington









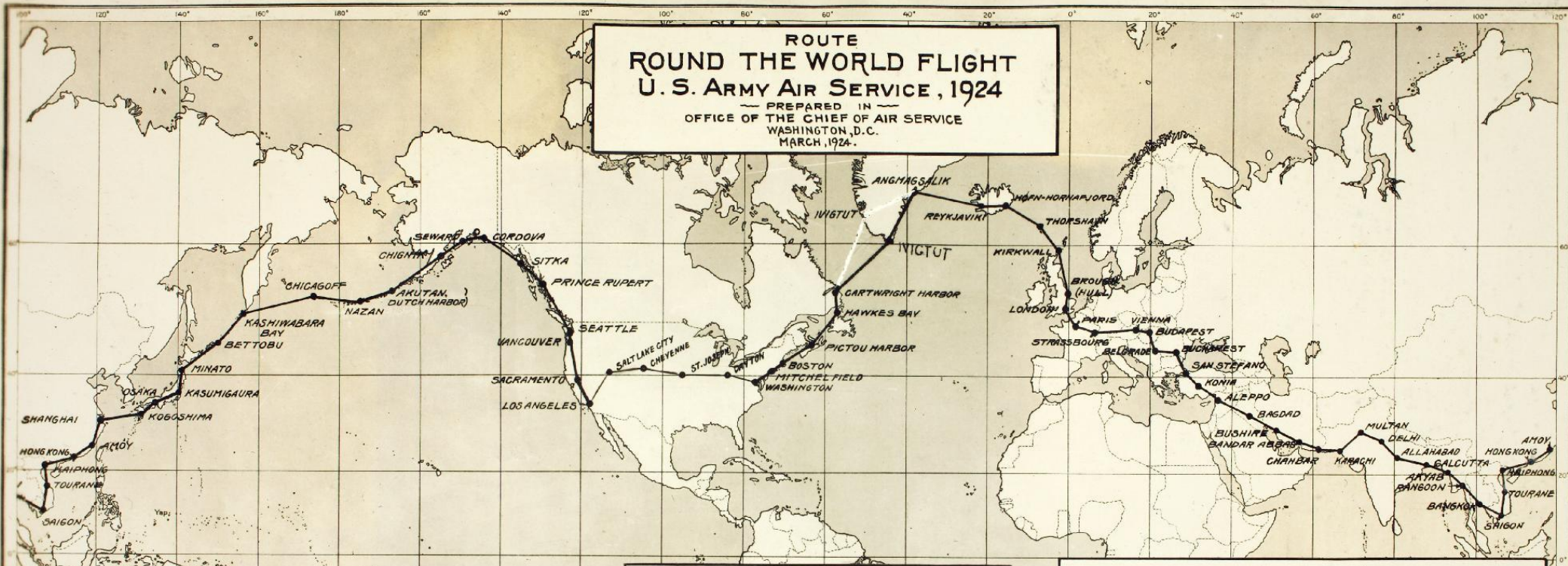




OUTLINE MAP OF THE WORLD

ROUTE  
ROUND THE WORLD FLIGHT  
U. S. ARMY AIR SERVICE, 1924

— PREPARED IN —  
OFFICE OF THE CHIEF OF AIR SERVICE  
WASHINGTON, D.C.  
MARCH, 1924.



FIRST DIVISION	
Los Angeles, California	Starting Point
Sacramento, California	350 Statute miles
Eugene, Oregon	375 " " "
X Seattle, Washington	240 " " "
Prince Rupert, B. C.	650 " " "
* Sitka, Alaska	300 " " "
Cordova, Alaska	475 " " "
Seward, Alaska	135 " " "
Chignik, Alaska	450 " " "
Akutlan	400 " " "
X Dutch Harbor	380 " " "
Nazan, Island of Atka	350 " " "
* Chicagoff, Island of Attu	530 " " "

SECOND DIVISION	
Kashiwabara Bay - Paramushiru Is. - Kurile Islands	860 " " "
Bettofu - Island of Vefaru	510 " " "
Minato, N.E. Coast of the Island of Honshu - Kurile Islands	475 " " "
Aomori to be used as supply base for Kurile Islands and Ominato	" " "
Kasumigaura Naval Air Station	395 " " "
X Yokohama to be used as a supply base	" " "
Osaka, Japan Japanese Air Station	360 " " "
Kagoshima, Kyushu Island, Japan	380 " " "
* Nagasaki to be used as a supply base	" " "

The points underlined are stops where pontoons will be used

THIRD DIVISION	
* Shanghai, China	610 Statute miles
Amoy, China	550 " " "
Hong Kong, China	300 " " "
Hai Phong, French Indo-China	500 " " "
Tourane, French Indo-China	395 " " "
* Saigon, French Indo-China	530 " " "
Bangkok Siam, Indo-China	675 " " "
Rangoon, Burma	450 " " "
Akyaw, Burma	445 " " "
X Calcutta, India	400 " " "

FOURTH DIVISION	
Allahabad, India	475 Statute miles
Delhi, India	380 " " "
Multan, India	425 " " "
* Karachi, India	475 " " "
Chahbar, Persia	330 " " "
Bandar Abbas, Persia	330 " " "
Bushire, Persia	400 " " "
* Bagdad, Mesopotamia	475 " " "
Aleppo, Syria	480 " " "
Konia, Turkey	285 " " "
X San Stefano, Turkey	300 " " "

FIFTH DIVISION	
Bucharest, Rumania	290 Statute miles
Belgrade, Serbia	290 " " "
Budapest, Hungary	220 " " "
* Vienna, Austria	140 " " "
Strassbourg, France	400 " " "
Paris, France	250 " " "
X London, England	225 " " "

SIXTH DIVISION	
X Brough, (Hull), England	155 " " "
Kirkwall, Orkney Islands	370 " " "
Thorshavn, Faroe Islands	275 " " "
Hafn Hornafjord, Iceland	260 " " "
* Reykjavik, Iceland	339 " " "
* Angmagssalik, Greenland	500 " " "
* Ivigtut, Greenland	500 " " "
Indran Harbor, Labrador	372 " " "
Cartwright Harbor, Labrador	40 " " "
Hawkes Bay, Newfoundland	290 " " "
Pictou Harbor, Nova Scotia	420 " " "
* Boston, Mass.	520 " " "
Mitchel Field, L. I., N.Y.	175 " " "
Washington, D. C.	220 " " "
Dayton, Ohio	400 " " "
St. Joseph, Mo.	615 " " "
Cheyenne, Wyo.	520 " " "
Salt Lake City, Utah	350 " " "
Los Angeles, Cal.	550 " " "

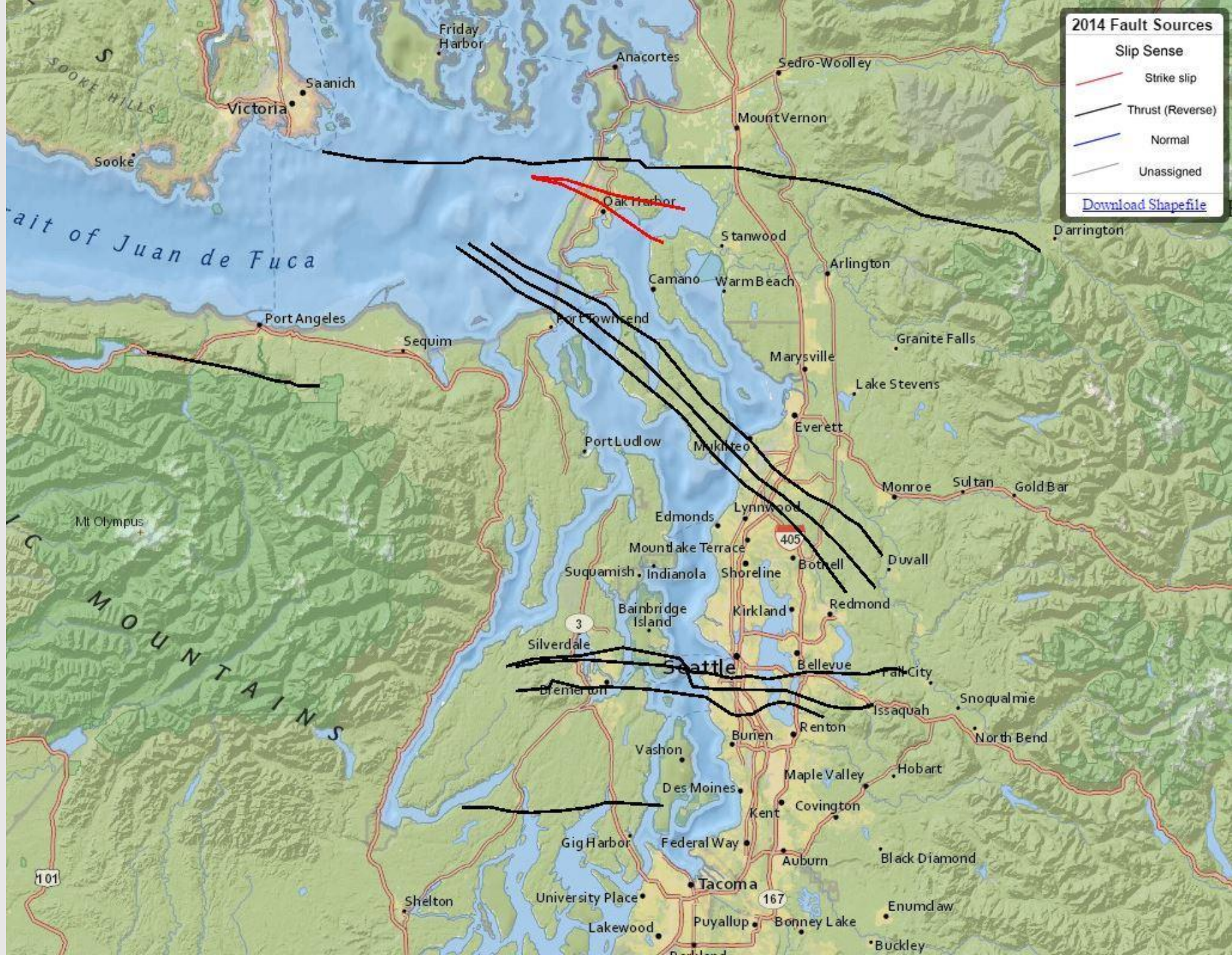
Stops indicated by X Main supply bases  
" " " " # Minor



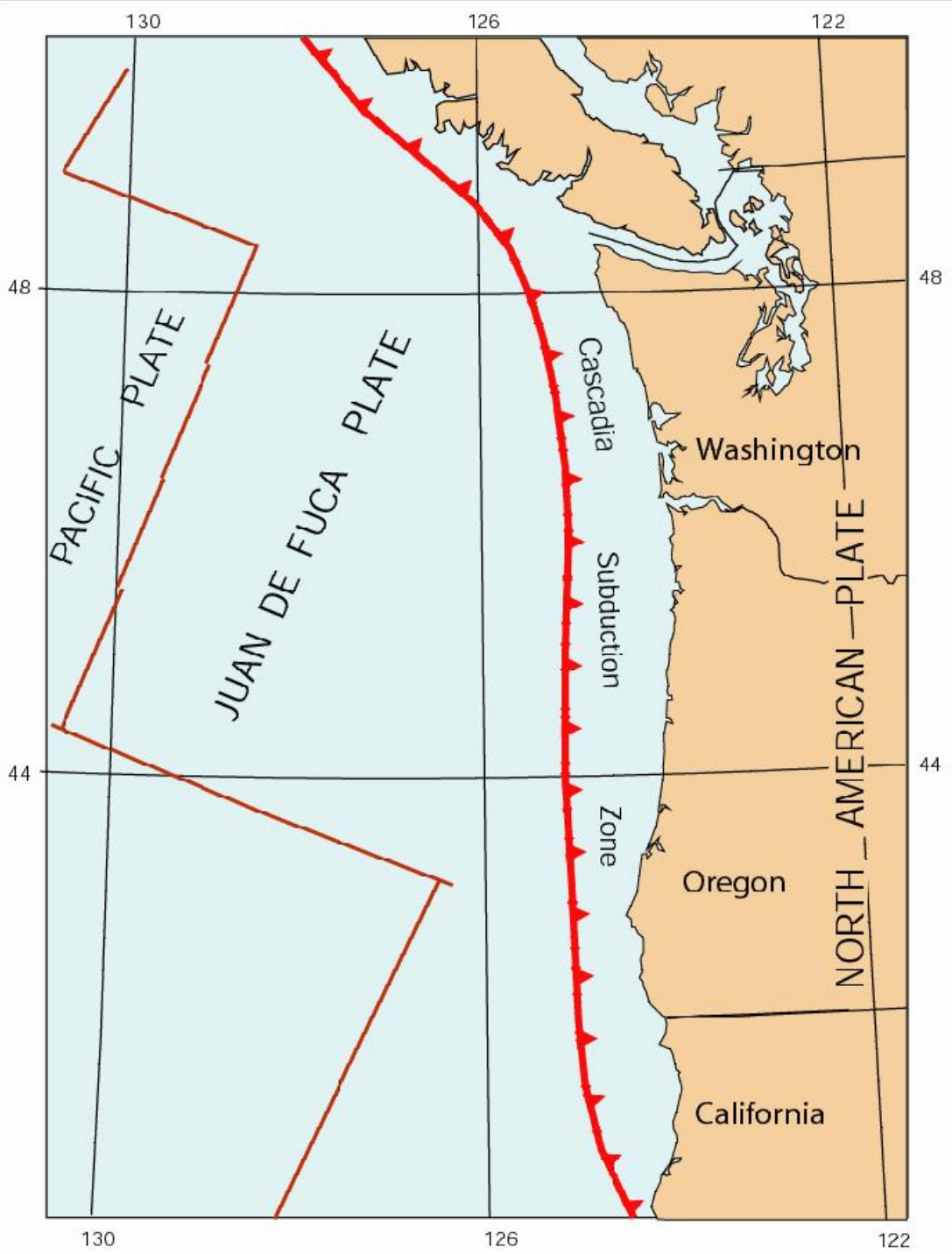














# EARTHQUAKE

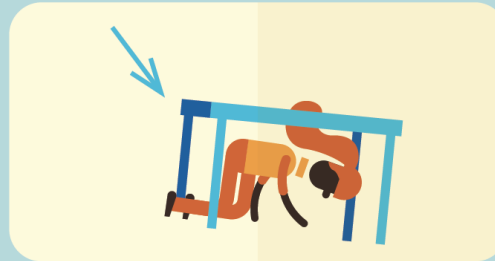
## ACTIONS TO TAKE DURING A QUAKE



### DURING THE SHAKING



**DROP**



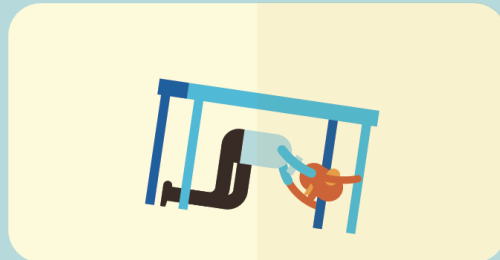
**COVER**



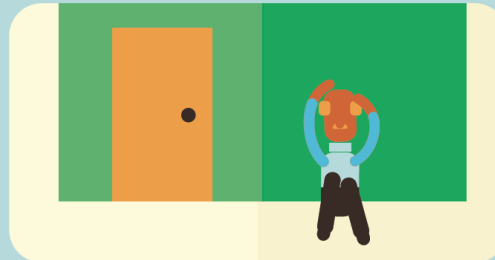
**AND HOLD ON**

*If there is no table around, get lower than the other furniture.*

### THINK



**BENEATH**



**BESIDE**



**BETWEEN**



# When the shaking stops

- Head to corner of the building
- Down the stairs
- Out the doors, and gather on the grass.
  - *Don't use the breezeway – main entrance to Building 3*
  - *Don't take the freight elevator*





# Some Housekeeping

- Bathrooms (down the hall, both levels)
- Water bottle refill station down the hallway
- Coffee, Tea, and some eats available
- Lunch – NOAA Cafe
- Transportation – Shuttle from hotel

